

**FIG. 251**

**Size Range:** 1/2" through 6" tube.

**Material:** 304 Stainless.

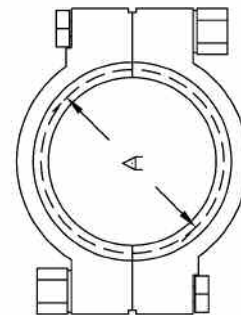
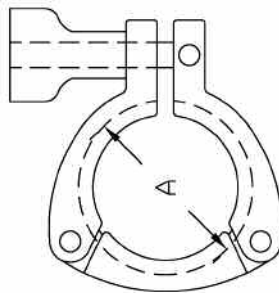
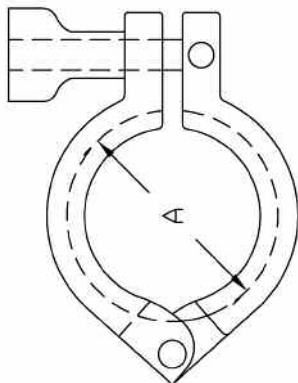
**Finish:** 25 RA.

**Service:** Used in connection of sanitary tube & fittings.

**Ordering:** Specify figure number, name, clamp type number and tube size.



Smooth Style Wing Nut Provided Unless Otherwise Requested



Standard Clamp	
Sanitary Clamp Type 1	
Size Range: 1/2" to 6" Tube O.D.	
Size (Tube O.D.)	ØA
1/2 - 3/4"	1.1"
1 - 1/2"	2.1"
2"	2.6"
2 1/2"	3.1"
3"	3.7"
4"	4.8"
6"	6.7"

CL-SAN1

3 Segment Clamp	
Sanitary Clamp Type 2	
Size Range: 1 1/2" to 4" Tube O.D.	
Size (Tube O.D.)	Ø A
1 - 1/2"	2.1"
2"	2.6"
2 1/2"	3.1"
3"	3.7"

CL-SAN2

High Pressure Clamp	
Sanitary Clamp Type 3	
Size Range 1 1/2" to 4" Tube O.D.	
Size (Tube O.D.)	Ø A
1 - 1/2"	2.1"
2"	2.6"
2 1/2"	3.1"
3"	3.7"

CL-SAN3